

West Nusa Tenggara Province

2006-2007

General Information

| | |
|-------------------------|------------------------------------|
| Area | 14,729.22 km ² (BPS) |
| Total Population | 4,292,500 (Projection 2007,BPS) |
| Number of Districts | 7 |
| Number of Cities | 2 |
| Number of Sub Districts | 100 |
| Number of Villages | 820 |

Health Facilities

| | TOTAL | DOTS |
|----------------------------|----------|------|
| Health Centre (PUSKESMAS) | 137 | 135 |
| Hospital | 13 | 11 |
| - General Hospital | 7 | 7 |
| - Private Hospital | 3 | 2 |
| - Police/Military Hospital | 2 | 2 |
| - BUMN Hospital | - | - |
| - Lung Hospital | - | - |
| BP4 | - | - |
| PRM,PS,PPM | 40/77/18 | |

TB Performance

| | 2006 | 2007 |
|---------------------------|--------|--------|
| Suspect Evaluation Rate * | 977.2 | 640.3 |
| CDR | 40.4 % | 33.3 % |
| CNR SS(+)* | 84.9 | 69.9 |
| Success Rate | 90.4 % | |

* = per 100,000 population

CNR SS+ in District - 2006

| | | |
|---|---------------|-------|
| 6 | LOMBOK TIMUR | 74.2 |
| 3 | LOMBOK BARAT | 74.5 |
| 9 | SUMBAWA BARAT | 79.3 |
| 7 | DOMPU | 83.3 |
| 5 | KOTA MATARAM | 84.4 |
| 2 | SUMBAWA | 85.0 |
| 4 | LOMBOK TENGAH | 87.2 |
| 1 | KOTA BIMA | 103.9 |
| 8 | BIMA | 158.7 |

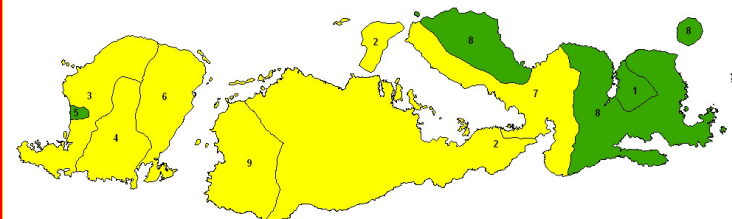
CNR SS+ in District - 2007

| | | |
|---|---------------|------|
| 2 | SUMBAWA | 60.5 |
| 3 | LOMBOK BARAT | 61.5 |
| 4 | LOMBOK TENGAH | 64.7 |
| 6 | LOMBOK TIMUR | 68.7 |
| 7 | DOMPU | 71.3 |
| 9 | SUMBAWA BARAT | 74.2 |
| 5 | KOTA MATARAM | 82.8 |
| 1 | KOTA BIMA | 87.9 |
| 8 | BIMA | 90.2 |



CNR SS(+)
West Nusa Tenggara Province 2006

CNR SS(+)
West Nusa Tenggara Province 2007



CNR SS(+)
West Nusa Tenggara Province 2007

West Nusa Tenggara Province

DONOR & NGO

Donor : GFATM

NGOs :

- PPTI - KuIS
- MSH - PERDHAKI
- PATH - NLR
- PKK - PELKESI
- AISYIAH - SOS PT. NNT

- PLAN INTERNATIONAL
- KOALISI MATARAM SEHAT
- KOALISI LOMBOK BARAT SEHAT

CONTACT ADDRESS :

Provincial CDC Office

Jl. Amir Hamzah No. 103 MATARAM 83121
 Phone/Fax : 0370-621288/ 0370-637921
 Email : p2mntb@yahoo.com

KaSubdin P2M: dr. H. Moch. Ismail (081237 63877)

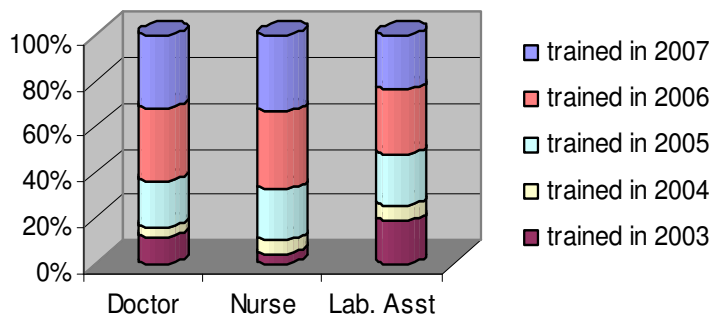
KaSIE P2M : dr. I Kt Artastra, MPH (081339646535)

Wasor Prop: Sri Hariyanti, SKM (08123786359), Hurnain Akmal

PPO : Isbandono, SKM (08123738498)

FA : Drs. Mustamin H, Jafar (081339880002)

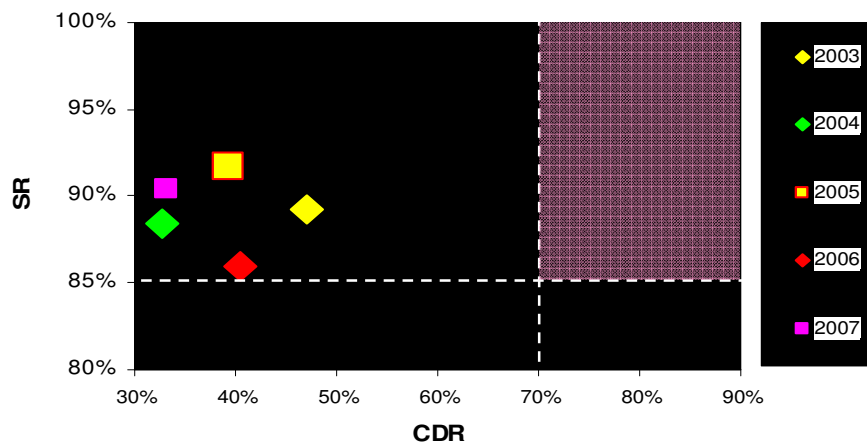
Training Status of HC Staff in West Nusa Tenggara Prov 2003-2007



HUMAN RESOURCES

Province Wasor: 2
 District Wasor: 19
 PPO: 1
 FA: 1

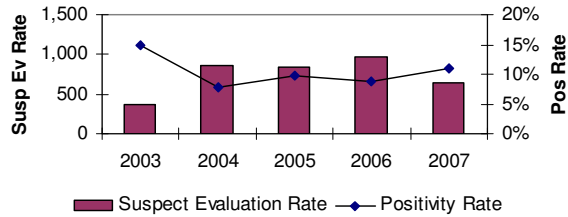
Road to Reach Global Target 2007 West Nusa Tenggara Province



West Nusa Tenggara Province

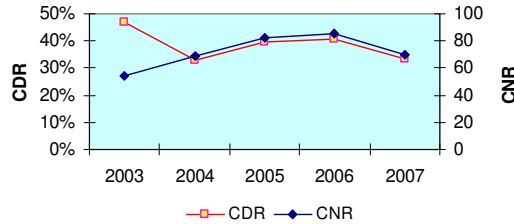
**Suspect Evaluation Rate and Positivity Rate
West Nusa Tenggara Prov.
2003-2007**

1



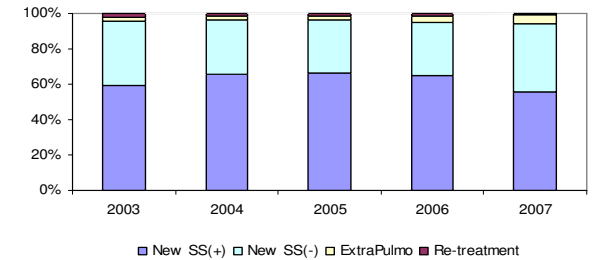
**CDR & CNR SS(+)
West Nusa Tenggara Prov.
2003-2007**

2



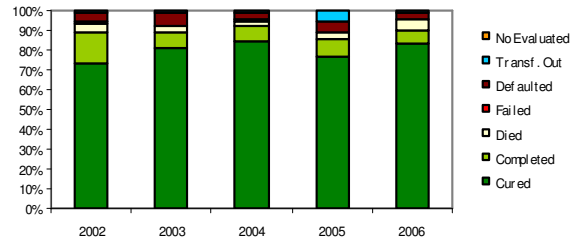
**Proportion of Type of Patients
West Nusa Tenggara Prov.
2003-2007**

3



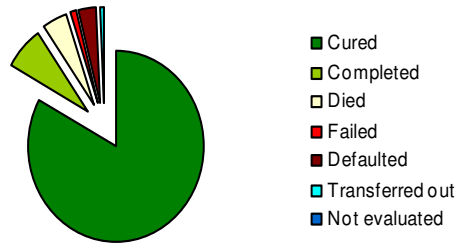
**Treatment Outcome, West Nusa Tenggara
Province 2002 - 2006**

4



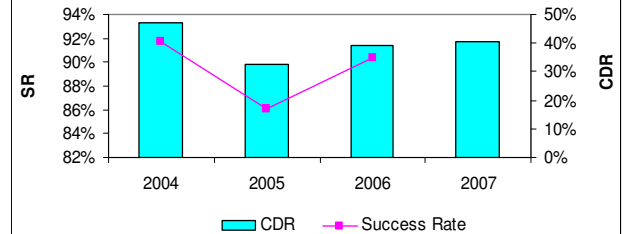
**Treatment Outcome, West Nusa Tenggara Province
2006**

5



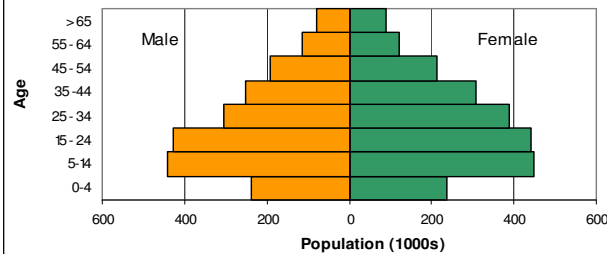
**CDR & SR
West Nusa Tenggara Prov.
2004-2007**

6



**Population by Age Group
West Nusa Tenggara Prov.
2007**

7



**Age Specific Rate SS(+)
West Nusa Tenggara Prov.
2007**

8

